

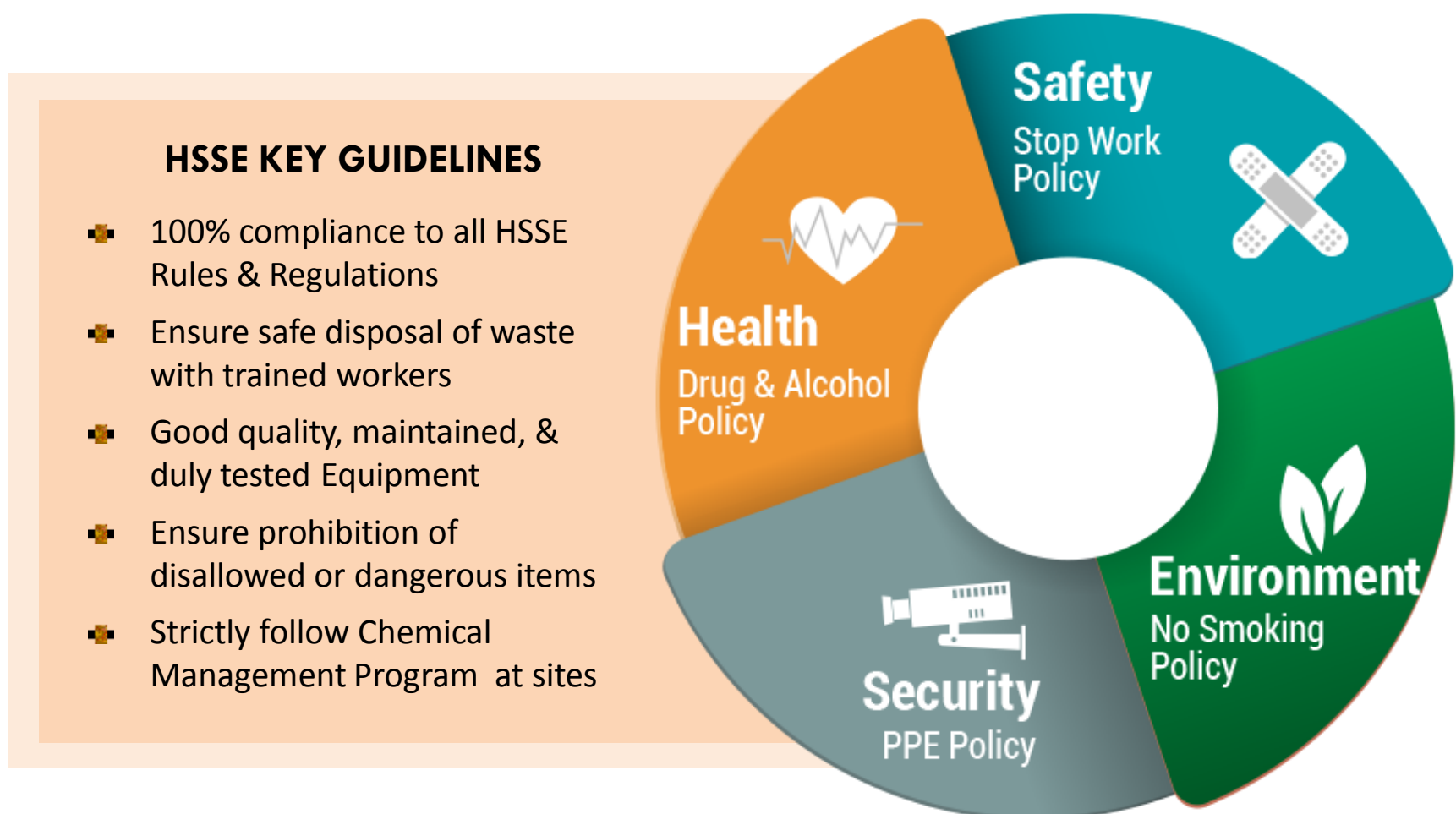
**SUCCESS STORIES**

**100% HSSE COMPLIANCE : HERE'S WHY CHERRY HILL IS ONE OF THE PIONEERS**

Environmental health and safety (EHS or HSE) ensure that the work undertaken by the company does not cause undue environmental damage, put the workers' health and safety at high risk, complies with applicable legislation, and follows best practices. EHS aims to prevent and reduce accidents, emergencies, and health issues at work, along with any environmental damage that could result from work practices. Proactive safety planning during all phases of construction is essential in order to reduce the

risk associated with construction and renovation activities, as well as eliminate hazards to construction workers, faculty, staff, students, and the public. This service includes the management and implementation of the Construction Safety Standard, pre-construction planning, evaluation of contractor safety performance, development of a project hazard analysis, detailed review of high-risk activities, and administration of a comprehensive substance abuse prevention program.

**HSSE IS A DISCIPLINE AND AN ESSENTIAL COMPLIANCE**



**KEY TO SUCCESS – FOLLOW AN EXTENSIVE SAFETY FIRST APPROACH**



Provide safe and healthy environment for all, achieved through proper training, protective equipment, and enforcement of safety rules



Appoint a Safety Manager responsible for establishing and maintaining an effective Health and Safety Program on the construction site



The management to ensure that all of their projects duly comply with all relevant local, state, and central governments regulatory requirements.



Maintaining a 100% accident-free and healthy environment at its sites through a positive safety attitude & knowledge of safe practices

**CHERRY HILL INTERIORS PRIVATE LIMITED**, one of the leading companies in occupancy services with a legacy of over three decades understands the importance of HSSE and has been actively working with various multinational and leading Indian clients along with many multinational project management companies to help them achieve optimum HSSE standards in each & every project. Cherry Hill Interiors has been successfully delivering state of the art projects with 100% compliance to all regulations and HSSE rules as laid out by the regulatory authorities in India as well as abroad. The company truly understands & promotes the importance of health, safety, security, and contributing to the environment by carrying out tasks in a safe and eco-friendly manner. Right from ensuring that all workers are adhering to the project policies and not carrying or using any prohibited items,



**Col. Narinder Bahl**  
Director  
Cherry Hill Interiors



to waste disposal management, Cherry Hill Interiors has achieved millions of safe man-hours at its projects with its excellent team of HSSE professionals who ensure that all of the HSE risks are assessed and addressed with efficient solutions and practices. The company has been awarded a SAP Award in the 'Emerging Business' category.

Being the leaders in occupancy services, Cherry Hill Interiors is well known for its 'Safety First' approach that company follows extensively and diligently in all of its projects. The company considers Safety as its No. 1 priority and has been working diligently toward the cause. It regularly hosts safety drills, conducts training sessions, places educational posters and banners across all of the sites, and works hard with the workers to ensure all of them understand the importance of their own safety and well-being.

**Col. Narinder Bahl**, Director of the company and an active promoter of healthy & hygienic facilities at project sites said - "Cherry Hill is known in the industry to follow world-class & best industry practices, with Zero Compromise on HSSE". He personally overlooks the various activities and drills that are regularly conducted on all of the Cherry Hill's sites to ensure that each session spent with the workforce is delivered in the best possible manner which yields the maximum output. Mr. Bahl even personally hosts many of such training sessions hosted all across the country – be it a session that educates the workers on tool box talks, workplace safety & personal hygiene, or a session that trains them for medical emergencies or adverse situations and how to deal with them.

Cherry Hill Interiors complies with all relevant local, state, and central governments regulatory requirements. It maintains accident-free and healthy environment through positive safety attitude & knowledge of safe practices. The company has achieved 750,000 'Safe Man-hours' at its SHELL work-site, and over 10,00,000 'Safe Man-hours' at DELL project sites.



**CHERRY HILL INTERIORS WORKS WITH PROJECT MANAGEMENT COMPANIES GLOBALLY TO**

- Pro-actively assess and address all Project Sites' HSSE risks
- Explain the value of having Improved HSSE systems in place
- Better Manage HSSE Risk Programs, and
- Improve the value generated from HSSE Programs



**BEST OFFICE SPACE**

G.E., BENGALURU  
DELL, NOIDA

**SAFE MAN-HOURS**

SHELL, BENGALURU  
DUPONT, GURUGRAM

**BEST SITE SAFETY**

RBS, NEW DELHI  
BARCLAYS, CHENNAI  
JANALAKSHMI FINANCIAL,  
BENGALURU

**CERTIFICATE OF HONOUR**

VODAFONE, BENGALURU