

# ELEMENTS POST

INDIA EDITION

VOL. XXXV

NOVEMBER 2023

Pages 1-2

## PROJECT OF THE MONTH

LTI MindTree (Pune) OFFICE, EXECUTED  
BY CHERRY HILL INTERIORS

Page 3

## PRODUCT SHOWCASE

PREMIUM FURNITURE BY  
CHERRY HILL OFFICE INTERIORS

Page 4-5

## HEALTH CHECK

HEALTH BENEFITS OF COCONUT  
WATER

VISIT OUR  
WEBSITE







Project: LTI MINDTREE  
 Location: Pune  
 Area: 2,25,000 Sq. Ft.  
 Scope: General Contracting



**PROJECT SHOWCASE** | LTI MindTree (Pune) – General Contracting EXECUTED BY CHERRY HILL INTERIORS

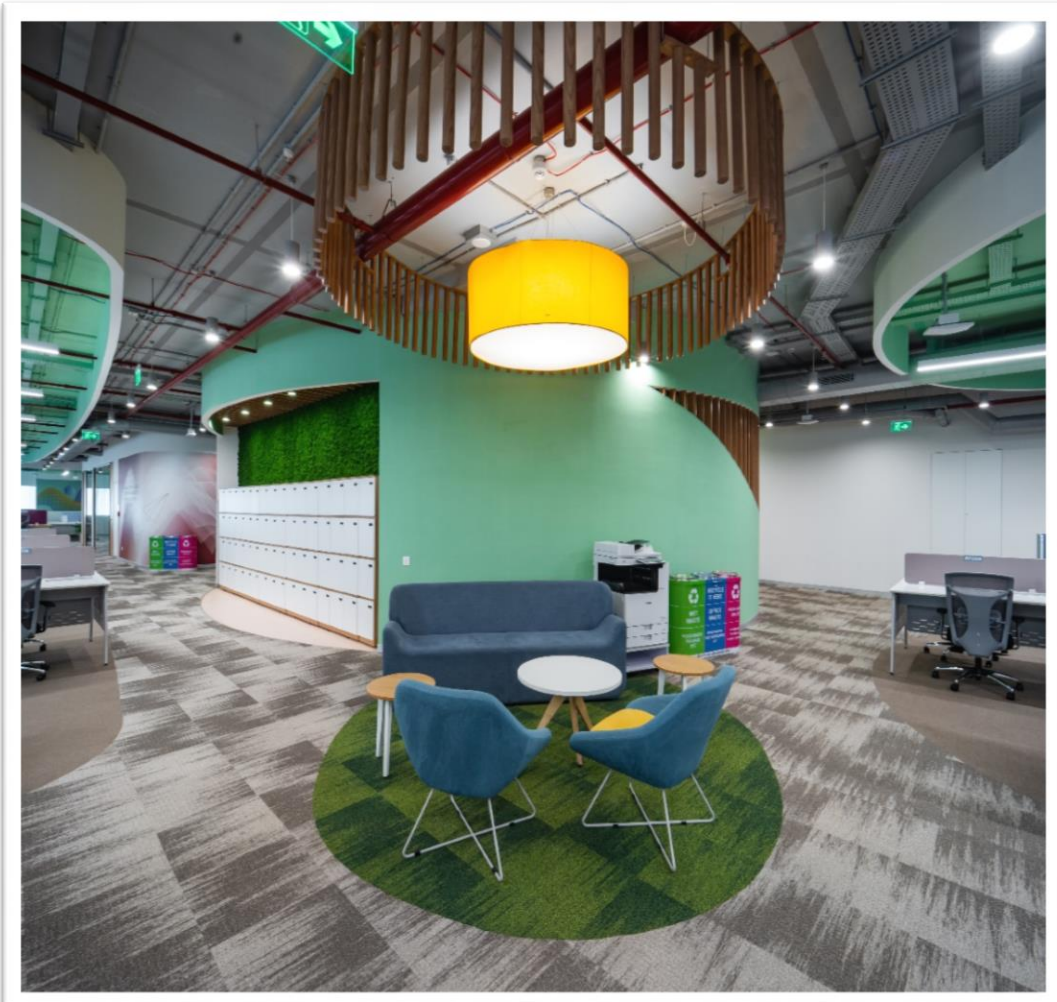
LTIMindtree is a global technology consulting and digital solutions company that enables enterprises across industries to reimagine business models, accelerate innovation, and maximize growth by harnessing digital technologies.

As a digital transformation partner to more than 700+ clients, LTIMindtree brings extensive domain and technology expertise to help drive superior competitive differentiation, customer experiences, and business outcomes in a converging world.

Powered by nearly 90,000 talented and entrepreneurial professionals across 30+ countries, LTIMindtree — a Larsen & Toubro Group company — combines the industry-acclaimed strengths of erstwhile Larsen and Toubro Infotech and Mindtree in solving the most complex business challenges and delivering transformation at scale.







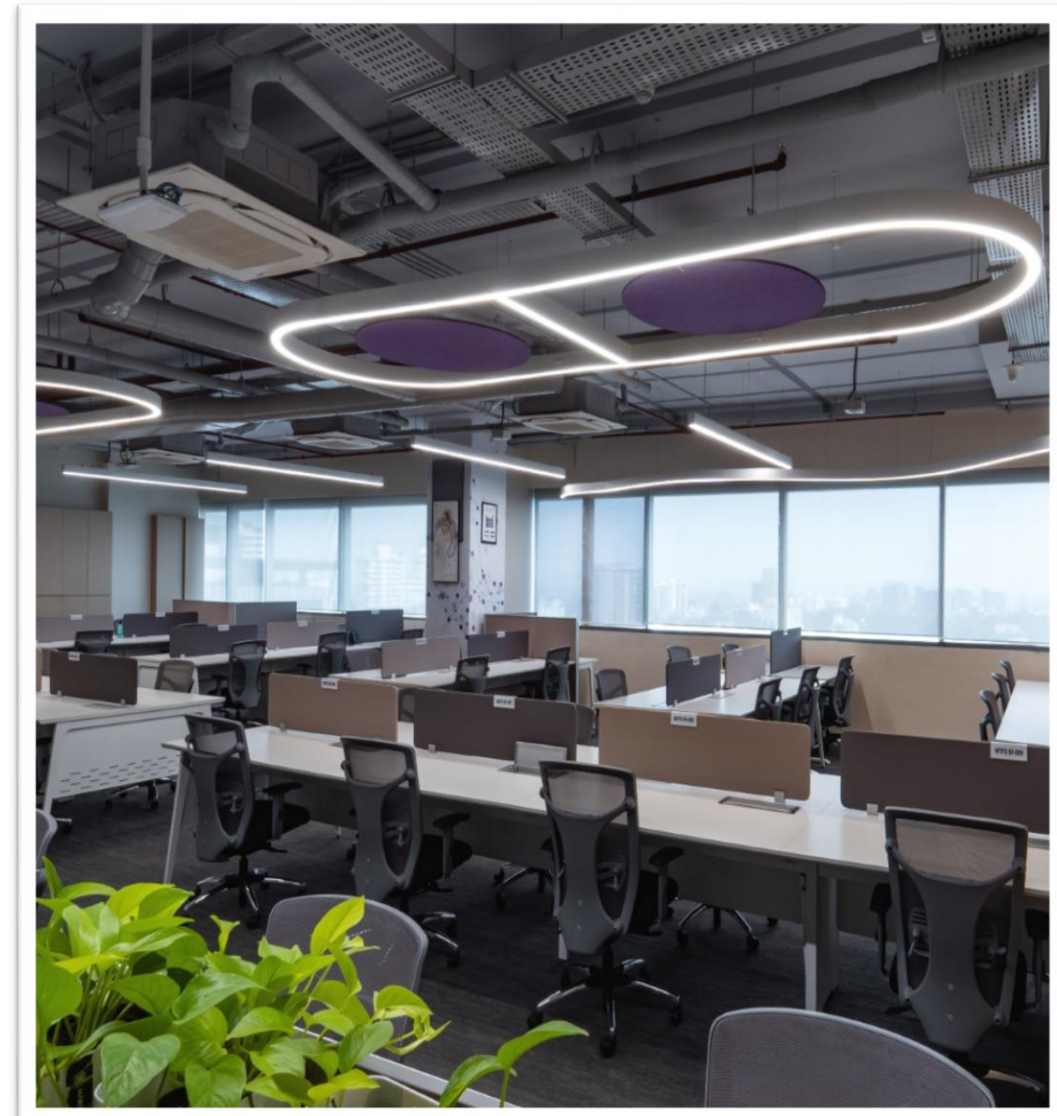
Creating everyday enjoyment in the lives of its customers, LTI MindTree shares a common goal of connecting people and addressing digital inequities.

The LTI MindTree office, Pune (2,25,000 sq.ft in area), Executed by Cherry Hill Interiors was delivered, with the intent to provide the client with a workspace that would allow for multiple meeting zones and an open work area for optimum space utilisation.



A flexible layout, coffered ceiling (adding depth) and play of design elements allow for both, a functional and an integrated workspace, providing employees with an environment that is safe, supportive and uninterrupted.

Colors add harmony to the space and are true to the Company's brand values and identity. At LTI MindTree, interiors have been reimagined similar to the lives of customers, providing all that is essential for a digitally growing space.



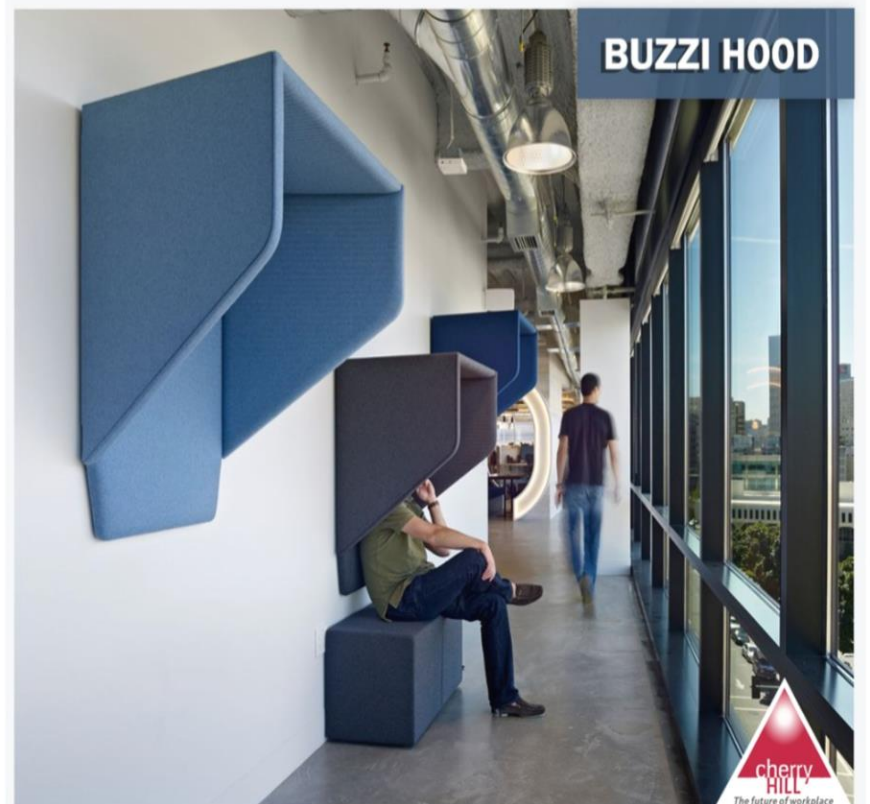


**PRODUCT SHOWCASE** | PREMIUM OFFICE FURNITURE BY CHERRY HILL INTERIORS

Klia chairs are part of the Kastel seating range. This chairs are attractive, but modest and discreet. A fiberglass reinforced polypropylene monobloc that can be used also outdoors. At the same time this is a light chair, quick and easy to stack and stow away, also available with armrests or a padded cushion, offering even greater comfort.



Buzzi Hood Instant privacy and protection in open spaces: take a break or make a call without anyone eavesdropping in this recognizable cocoon, reminiscent of the well-known office phone booth commonly seen in airports, hotel lobbies, train station or other public spaces.



Buzzi Pleat is unlike any other acoustic panel due to its sustainable attributes and handcrafted nature. The avant-garde solution is crafted from our hero BuzziFelt textile, which is made of fully recycled materials, and is hand pleated and laced to perfection.



Sleek & Simple Essential, comfortable, and functional lines are the main features of Kendra. Designed to furnish waiting areas with a refined simplicity. it is softly curved to offer #comfort and freedom of movement. With its strict but soft shapes, enhanced by the natural shades of wood.



## HEALTH-CHECK: HEALTH BENEFITS OF COCONUT WATER

- Keep you Hydrated
- High in potassium
- Low in calories
- Free of fat and cholesterol
- Helps in reducing the risk of kidney stones
- Keeps your skin healthy



Source: Dilbert

## QUOTE OF THE MONTH



When you have to work, work with a smile



~ *kapil dev*





**RADIANCE™**  
MAKE YOUR WORLD SHINE & SMILE.

Smart  
OFFICE  
Services



## Make your world cleaner, healthier, happier.

Radiance's expert team not only eradicates traces of bacteria, viruses, dirt and dust mites from your premises, it also enhances visual beauty of each item. We use special treatments to increase the life of your expensive furniture items, delaying the need to replace them. Give us a call, and experience the fresh energy of pride and productivity among your employees.



### OUR SERVICES

- Deep Cleaning Services
- Facade Cleaning Services
- Fabric Protection Treatment
- Paint Treatment
- Floor Enhancement Services
- Housekeeping Services
- Furniture Enhancement & upholstery Cleaning



Police verified & health checked service crew. Also trained in first aid & fire safety.

RADIANCE SPACE SOLUTIONS PVT. LTD. | +91 8595 121212 | www.radiancespace.com

This newspaper is sponsored by:

VISIT OUR WEBSITE  
ELEMENTSPOST.IN



The future of workplace

CHERRY HILL INTERIORS PVT. LTD.

www.cherryhill.in

TO CONTRIBUTE  
ARTICLES/ SHARE  
FEEDBACK

CONTACT@  
ELEMENTSPOST.IN

**Disclaimer:** This e-mail/publication may contain privileged, undisclosed, or otherwise confidential information. If you have received this e-mail/publication in error, you are hereby notified that any review, copying, or distribution of it is strictly prohibited. Please inform us immediately and destroy the original transmittal. Thank you for your cooperation. This publication only provides general information on the Corporate Interiors industry that may interest you. If you find an error or omission in this publication, please notify the editor & we shall get the information rectified immediately. To learn more, please contact the editor via e-mail. This publication does not (and is rather not intended to) provide any advice/recommendation /suggestion/endorsement and the reader needs to consult Experts /Consultant /Advisor before taking any considered decision. Do not rely on any information available on the publication or its website without Independent Verification. The information in this publication is true / correct to the best of our knowledge. All information is given without any guarantee on part of the author, editor and publisher. The author, editor and publisher disclaim any liability and is not liable in connection with use of this information, data, content provided by the publication and/or its website. Please note that any Kind of replication (or copy) by the reader of the content/ information/ data / design etc (given in the publications and/or its website) is strictly prohibited. To ensure you continue to receive this information properly, please add [contact@elementspost.in](mailto:contact@elementspost.in) to your address book/ safe senders list. If you prefer not to receive this news in the future, please send an unsubscribe request via email to [contact@elementspost.in](mailto:contact@elementspost.in)